

ST. BERNARD PARISH DRAINAGE & PUMPING SYSTEM

Guy McInnis
Parish President





- The Southeast Louisiana Flood Protection Authority - East (SLFPA-E) covers three consolidated districts: East Jefferson Levee District, Orleans Levee District and Lake Borgne Basin Levee District;
- SLFPA-E was created by Act of Louisiana State Legislature in 2006;
- Governed by a 9 member Board of Commissioners appointed by the Governor of Louisiana;
- Board of Commissioners governs 3 Levee Districts;
- SLFPA-E Oversight provided by the Coastal Protection and Restoration Authority.

SLFPA-E Jurisdiction – Active Levee Districts



Primary Purposes



- Operation and Maintenance of Levee District Infrastructure
 - Levee System
 - Riverine
 - Coastal
 - Major Internal Drainage
 - Major Drainage Channels
 - Major Pump Stations

LBBLD Operations

- LBBLB is responsible for 8 pumping stations in St. Bernard;
- Currently there are 7 Pump Station Operators; down from 15 in 2016 and 24 Pre-Katrina;
- Pump Stations #6, #7 and #8 are currently manned 10 hours per day, seven days per week by LBBLD.
- Pump Stations #1, #2, #3, #4, #5 are manned as needed
- Currently there are 9 Field Operations Personnel, down from 11 in 2012;
- Total projected required funding to run all 8 pumping stations is \$2,910,000 in 2016.

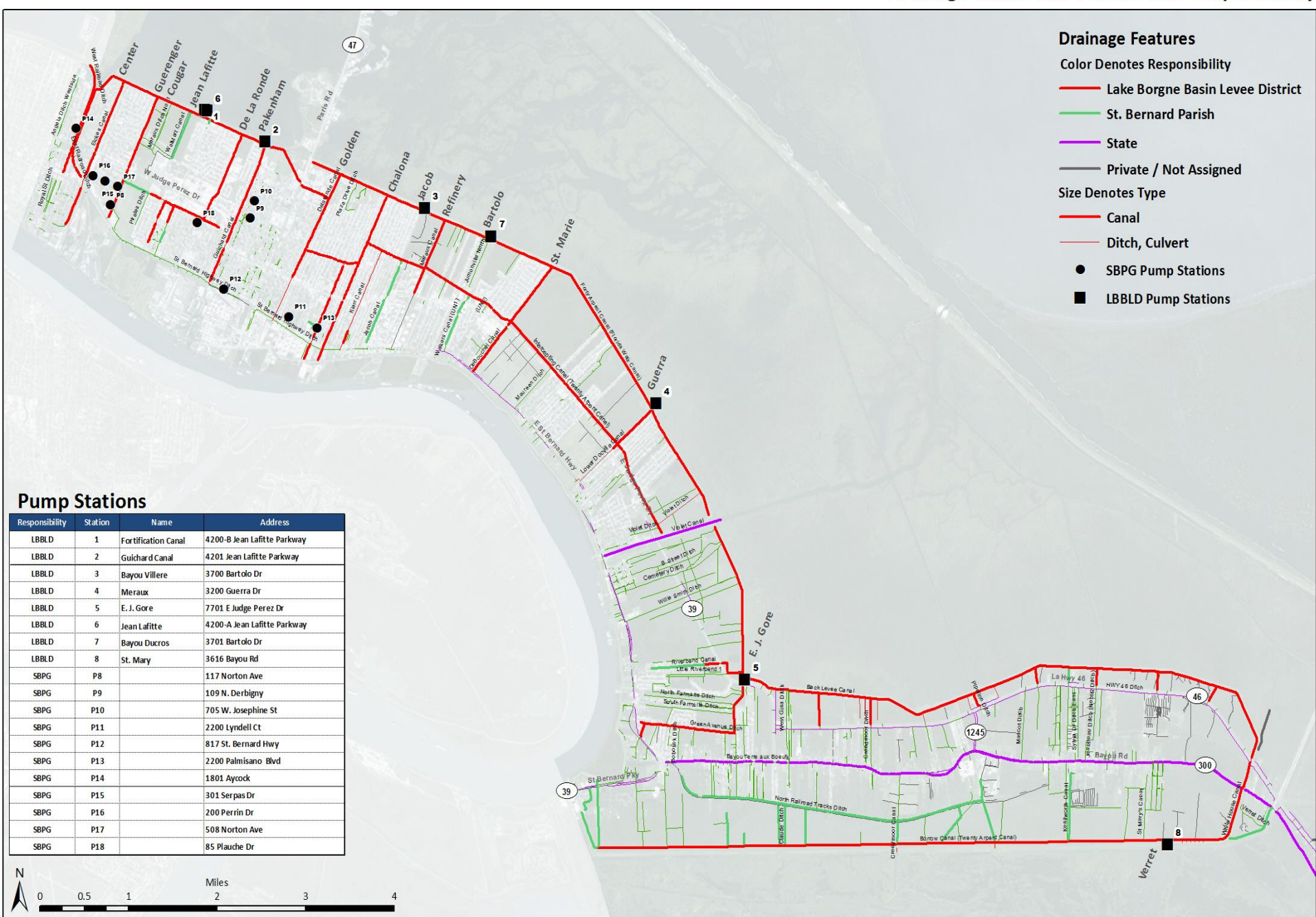
Lake Borgne Operated Pumping Stations in St. Bernard Parish

LBBLD Drainage Pump Station No.	Station Name	Station Address	
1	Fortification Canal	4200-B Jean Lafitte Pkwy	Chalmette
2	Guichard Canal	4201 Jean Lafitte Pkwy.	Chalmette
3	Bayou Villere	3700 Bartolo Drive	Meraux
4	Meraux	3200 Guerra Drive	Violet
5	E. J. Gore	7701 E. Judge Perez Drive	Violet
6	Jean Lafitte	4200-A Jean Lafitte Pkwy.	Chalmette
7	Bayou Ducros	3701 Bartolo Drive	Meraux
8	St. Mary	3616 Bayou Road	St. Bernard

Lake Borgne Basin Levee Pump Station

Capacity Information as of 8-11-17

LBBLD Pump Station No.	Operator Status	No. of Pumps	Total Capacity (CFS)	No. of Pumps Operational	Current Capacity (CFS)	Percentage Operational
1 *	Manned as needed	3	1080	2	600	55.56%
2	Manned as needed	4	730	4	730	100%
3 **	Manned as needed	3	501	2	334	66.67%
4 ***	Manned as needed	3	1080	1	485	44.91%
5	Manned as needed	6	660	6	660	100%
6	Manned	3	950	3	950	100%
7	Manned	3	950	3	950	100%
8	Manned	3	802	3	802	100%
Total		28	6,753	24	5,511	83.39%
* Engine currently out for replacement associated with Parish project						
** Pump currently out for repair (vibration issue associated with recent re-build).						
***Engine currently out for replacement associated with Parish project and also						



St. Bernard Parish Government Operated Pumping Stations

SBPG Drainage Pump	Station Address	
P8	117 Norton Ave.	Arabi
P9	109 N. Derbigny	Chalmette
P10	705 W. Josephine St.	Chalmette
P11	2200 Lyndell Ct.	Chalmette
P12	817 St. Bernard Hwy.	Chalmette
P13	2200 Palmisano Blvd.	Chalmette
P14	1801 Aycock	Arabi
P15	301 Serpas Dr.	Arabi
P16	200 Perrin Dr.	Arabi
P17	508 Norton Ave.	Arabi
P18	85 Plauche Dr.	Chalmette

LBBLD Overgrown Canals & Ditches



FORTIFICATION CANAL



EICKES CANAL

2016/09/26



20 ARPENT AT GUERRA

2016/09/26



40 ARPENT AT GUERRA

2016/09/26



EAST RAILROAD DITCH

2016/09/26

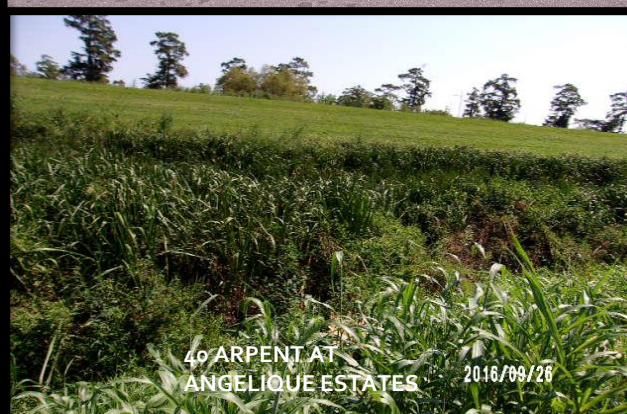


20 ARPENT AT
ST. MARIE ST.

2016/09/26



20 ARPENT
NEAR GALLO



40 ARPENT AT
ANGELIQUE ESTATES

2016/09/26



GUERENGER CANAL

2016/09/26

LBBLD Canals

Council Districts A & B

LBBLD – CANAL NAME	DISTRICT
Blue Bird Lateral Canal	A
Chalmette Vista Canal	A
Congressman Hebert Canal (Fortification/Artillery)	A
East Railroad Ditch	A
Eickes Canal	A
Eickes Canal Extension	A
Forty Arpent Canal (Florida Walk Canal)	A
Guerenger Canal	A
Guichard Canal	A
Pump Station No. 1	A
Pump Station No. 2	A
Pump Station No. 6	A
West Railroad Ditch	A
Tiger Town Ditch (Creely Canal)	A
Blue Bird Lateral Canal	B
Chalmette Vista Canal	B
Delaronde Canal	B
Forty Arpent Canal (Florida Walk Canal)	B
Guichard Canal	B
Intercepting Canal (Twenty Arpent Canal)	B
Virtu St Canal	B

LBBLD Canals

Council Districts C, D & E

LBBLD – CANAL NAME	DISTRICT
Corinne Canal (Chalona & Gallo Canal)	C
Forty Arpent Canal (Florida Walk Canal)	C
Intercepting Canal (Twenty Arpent Canal)	C
Kierr Canal	C
Meraux Canal	C
Pump Station No. 3 (Bayou Villere)	C
Water Works Ditch (Palmisano Canal)	C
DeBouchel Canal	D
Forty Arpent Canal (Florida Walk Canal)	D
Intercepting Canal (Twenty Arpent Canal)	D
Lower Docville Canal	D
Pump Station No. 4 (Meraux)	D
Pump Station No. 7 (Bayou Ducros)	D
Back Levee Canal	E
Back Levee Canal (White House Canal)	E
Borrow Canal (Twenty Arpent Canal)	E
Creedmoor Ditch	E
Forty Arpent Canal (Florida Walk Canal)	E
Green Avenue Ditch	E
Intercepting Canal (Twenty Arpent Canal)	E
Pipeline Ditch	E
Pump Station No. 4 (Meraux)	E
Pump Station No. 8 (St Mary)	E
Riverbend Canal	E
White House Canal	E

St. Bernard Parish Canals by Council District

SBPG – CANAL NAME	DISTRICT
Blue Bird Lateral Extension	A
Congressman Hebert Canal (Fortification Canal)	A
Meraux Ditch No. 2	A
Jacob Canal	C
Delchamps Ditch (UN1)	D
Walkers Canal (UN1)	D
Bayou La Loutre (Florissant Hwy. Canal)	E
Claude Ditch	E
Creedmoor Canal	E
Dean Canal (Caenarvon Canal)	E
Delacroix Levee Canal	E
Faudraix Ditch	E
Kenilworth Canal	E
Mascot Ditch	E
North Railroad Tracks Ditch	E
Olivier Canal	E
Pull Boat Canal	E
Reggio Levee Canal	E
Reunion Ditch	E
Riverbend Canal	E
Sugar Mill Ditch	E

Other Canals

OTHER – CANAL NAME	OWNER	DISTRICT
Wal-Mart Canal	Wal-Mart	A
Wal-Mart Ditch	Wal-Mart	A
Bayou La Loutre	State	E
Bayou La Loutre (Florissant Hwy Canal)	State	E
Bayou Terre aux Boeufs	State	E
Violet Canal	State	E