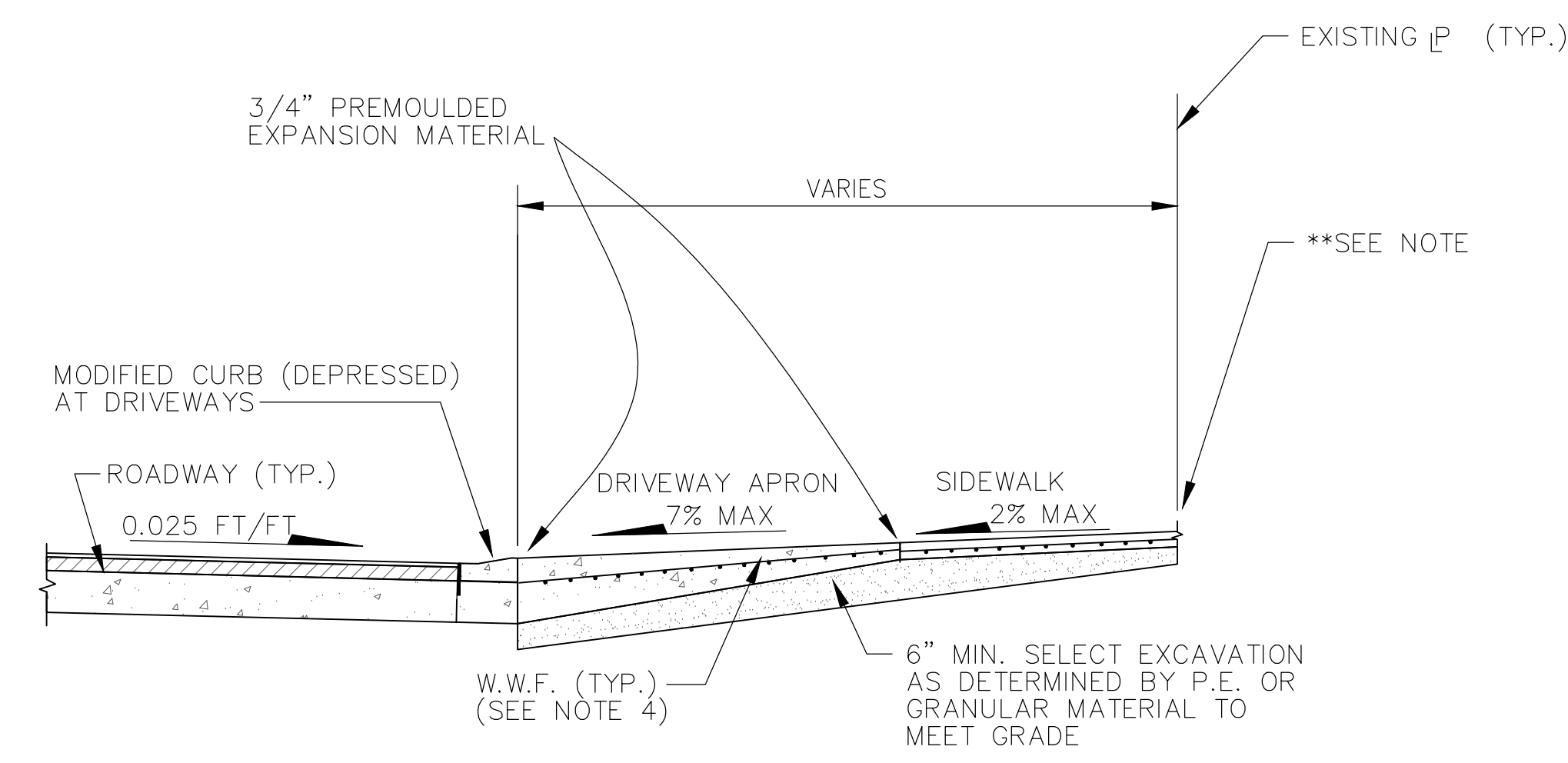
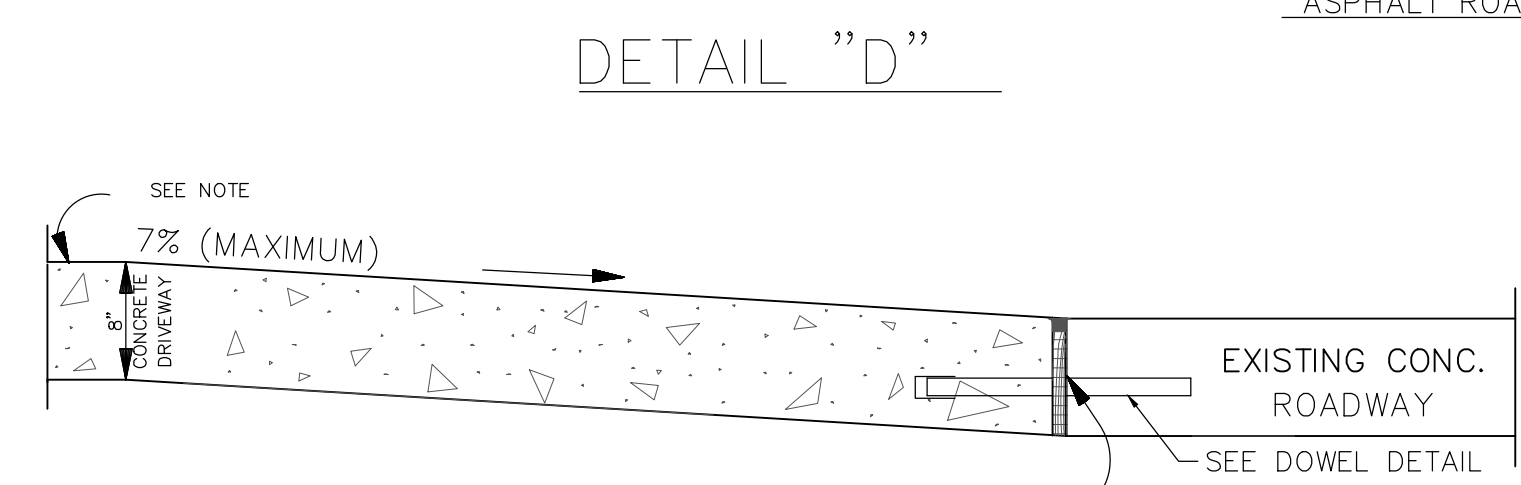
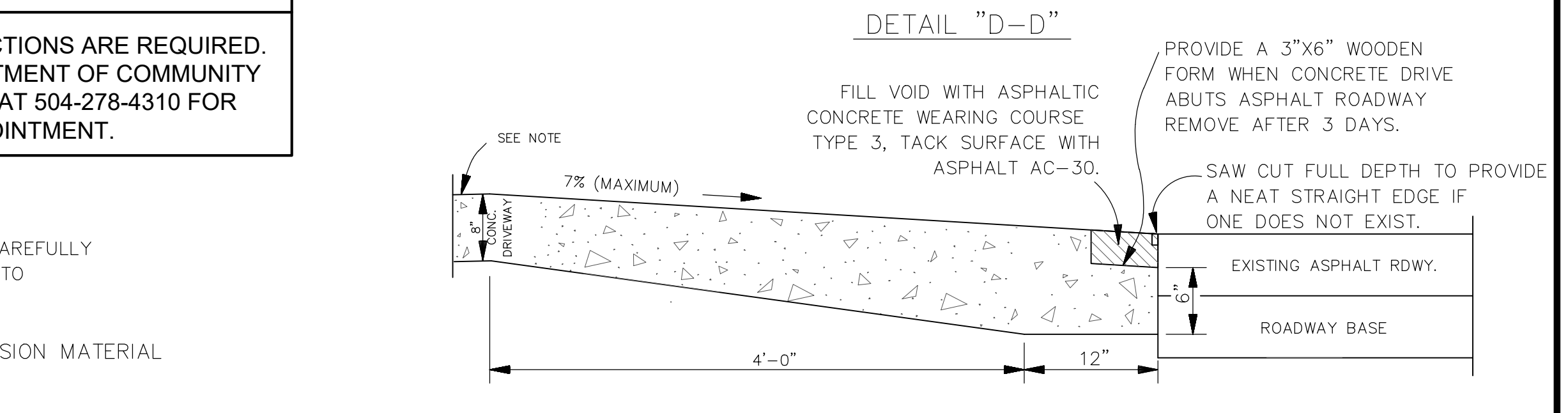
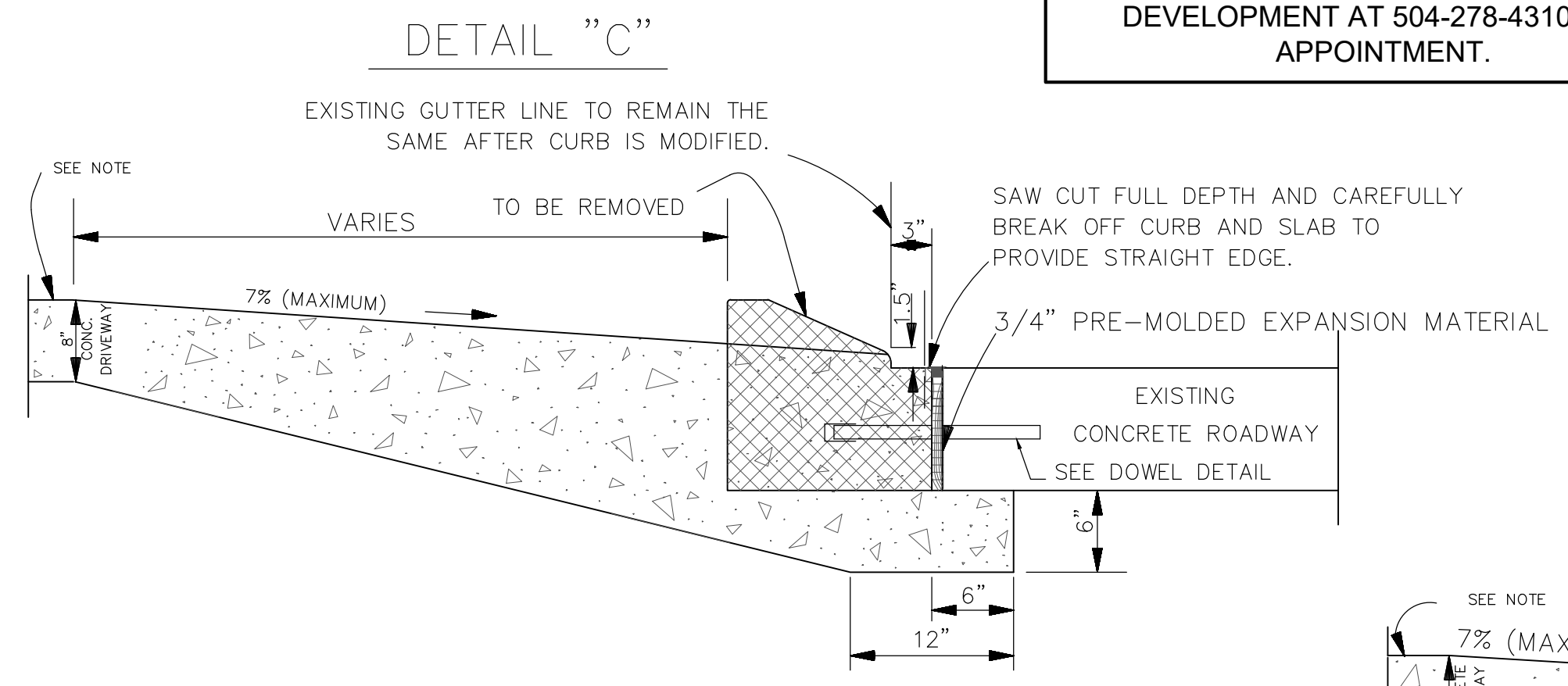
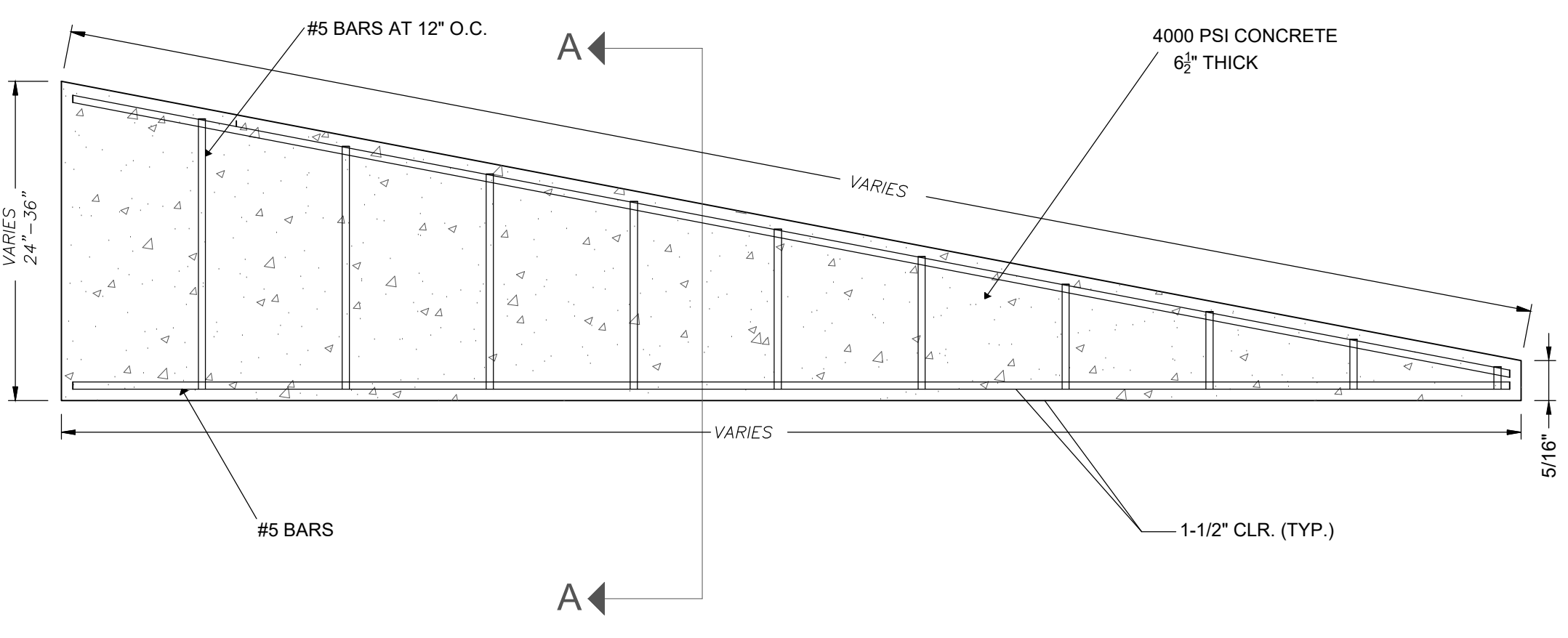
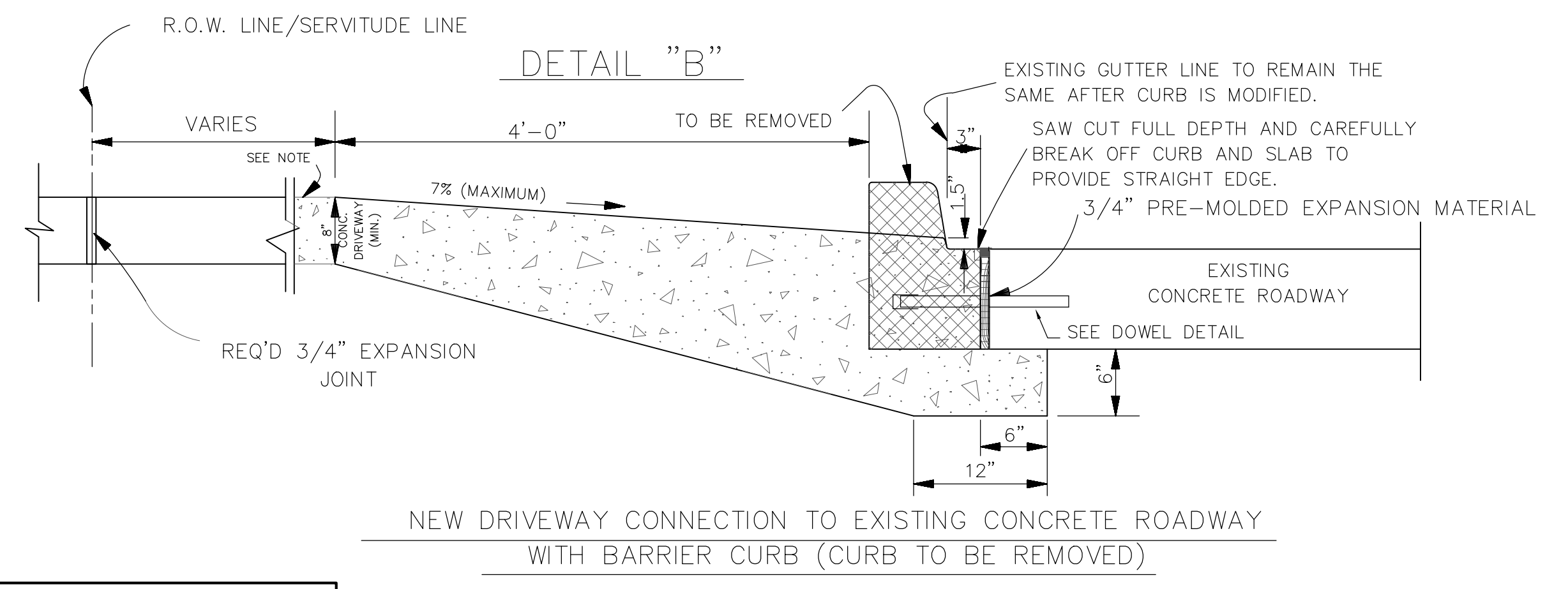
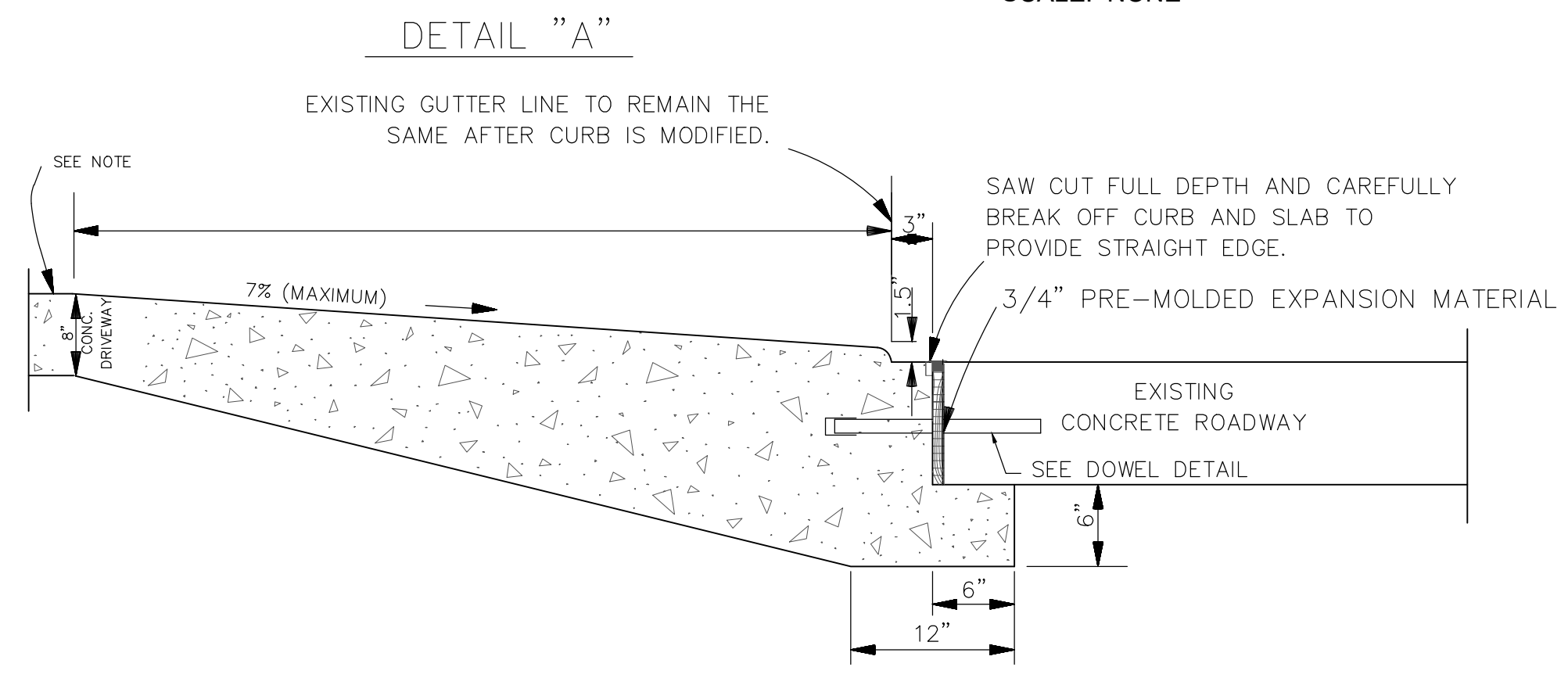
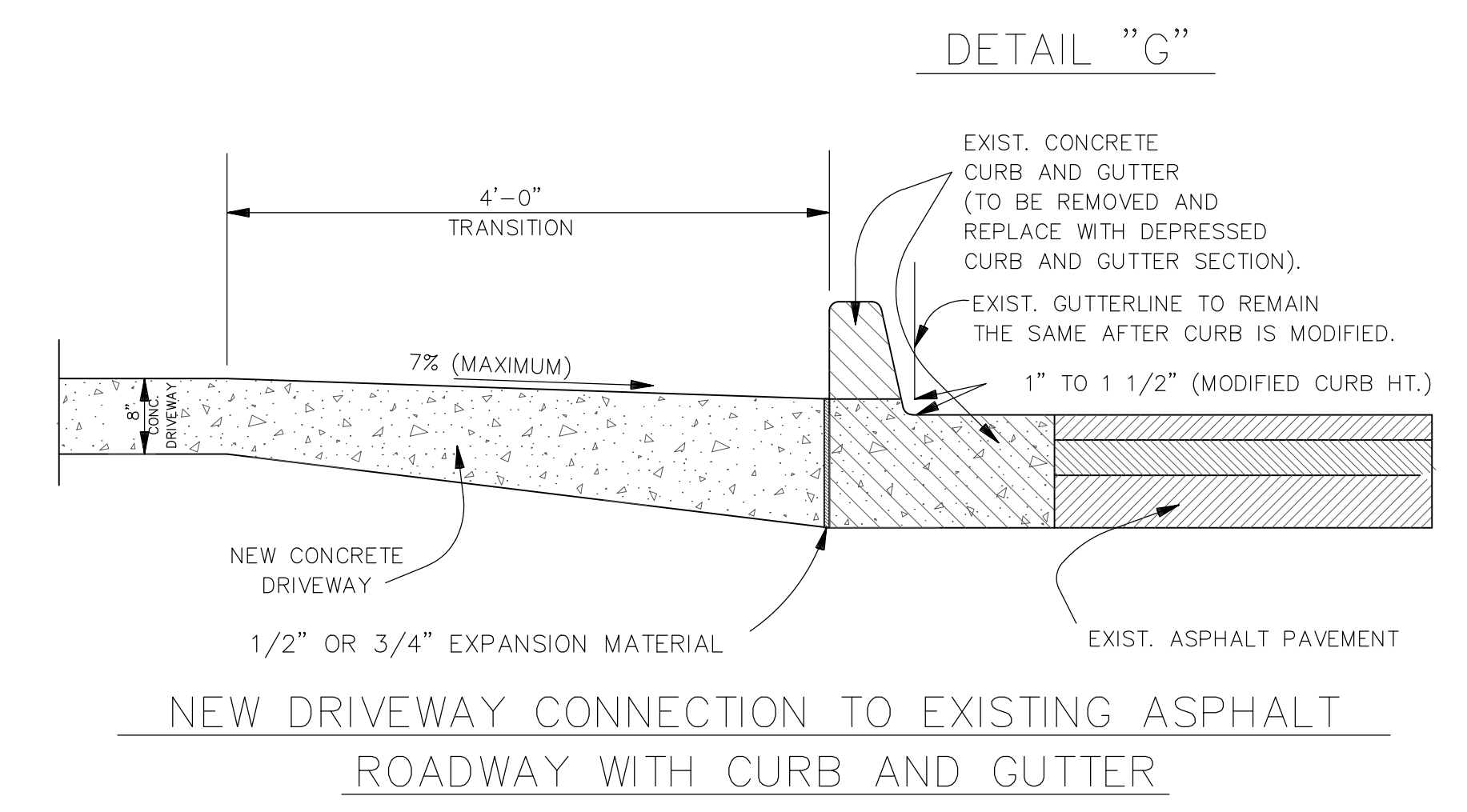


TYPICAL DRIVEWAY INSTALLATION
SCALE: NONE

- DRIVEWAY NOTES:**
- 1) DRIVEWAY WIDTH SHALL BE AS DIRECTED BY PROJECT ENGINEER IN FIELD.
 - 2) LIMITS OF DRIVEWAYS SHALL BE AS DIRECTED BY PROJECT ENGINEER IN THE FIELD.
 - 3) LIMITS OF SIDEWALK REMOVAL TO BE DETERMINED IN FIELD BY PROJECT ENGINEER.
 - 4) DRIVEWAYS SHALL BE REINFORCED WITH 6" X 6" X 10/10 WELDED WIRE REINFORCEMENT SHEETS.
 - 5) FLARE WIDTHS MAY HAVE TO BE ADJUSTED TO MEET FIELD CONDITIONS. PROJECT ENGINEER SHALL DIRECT CONTRACTOR IN FIELD.
 - 6) DRIVEWAY SLOPE SHALL NOT EXCEED 7% WITHOUT WRITTEN APPROVAL FROM PROJECT ENGINEER.
 - 7) NO WORK SHALL BE PERFORMED ON PRIVATE PROPERTY UNLESS THE PARISH HAS OBTAINED A RIGHT OF ENTRY FROM THE PROPERTY OWNER.
 - 8) MATCH EXISTING DRIVEWAY MATERIALS "IN KIND". (EXP. AGGREGATE, BRICK, ETC...) (N.D.P.)
 - 9) IF PROJECT ENGINEER DETERMINES THAT TYPICAL DRIVEWAY DETAIL IS NOT FEASIBLE, CONTRACTOR TO REPLACE "IN KIND".
 - 10) SIDEWALK AND DRIVEWAY APRON THICKNESS SHALL BE 8" FOR COMMERCIAL.

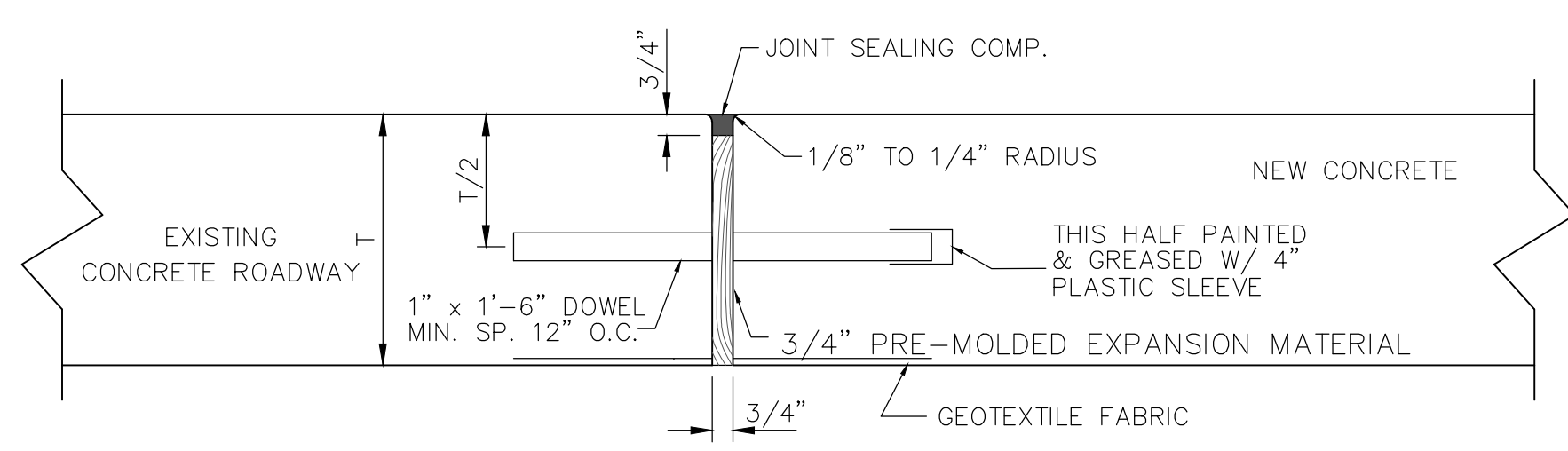


SECTION "C-C"
DRIVEWAY TYPICAL SECTION
SCALE: NONE



NOTED:
PRE-POUR INSPECTIONS ARE REQUIRED. CALL THE DEPARTMENT OF COMMUNITY DEVELOPMENT AT 504-278-4310 FOR APPOINTMENT.

NOTE:
AN EXPANSION JOINT WILL BE REQUIRED ALONG RIGHT-OF-WAY (R.O.W.) LINE OR SERVITUDE LINE. (SEE DETAIL "B") (APPLICABLE IN ALL SITUATIONS).



DOWEL DETAIL

SECTION A-A



PROJECT NAME :		PROJECT NUMBER:	
DATE	03.09.2020	ST. BERNARD PARISH GOVERNMENT	
DRAWN BY	MF/AR	STANDARD DETAIL PLANS	
SCALE:	NTS	DRIVEWAY CONNECTION DETAILS	
FILENAME:	S:\Public Works Shared\St. Bernard Standard Details	COMMERCIAL	
APPROVED BY		DRAWING NUMBER	SD - 11
DATE		SHEET 11 OF 13	
THIS DOCUMENT WILL BE CONSIDERED A COPY ONLY, UNLESS EMBOSSED BY A REGISTERED ENGINEER'S SEAL.			